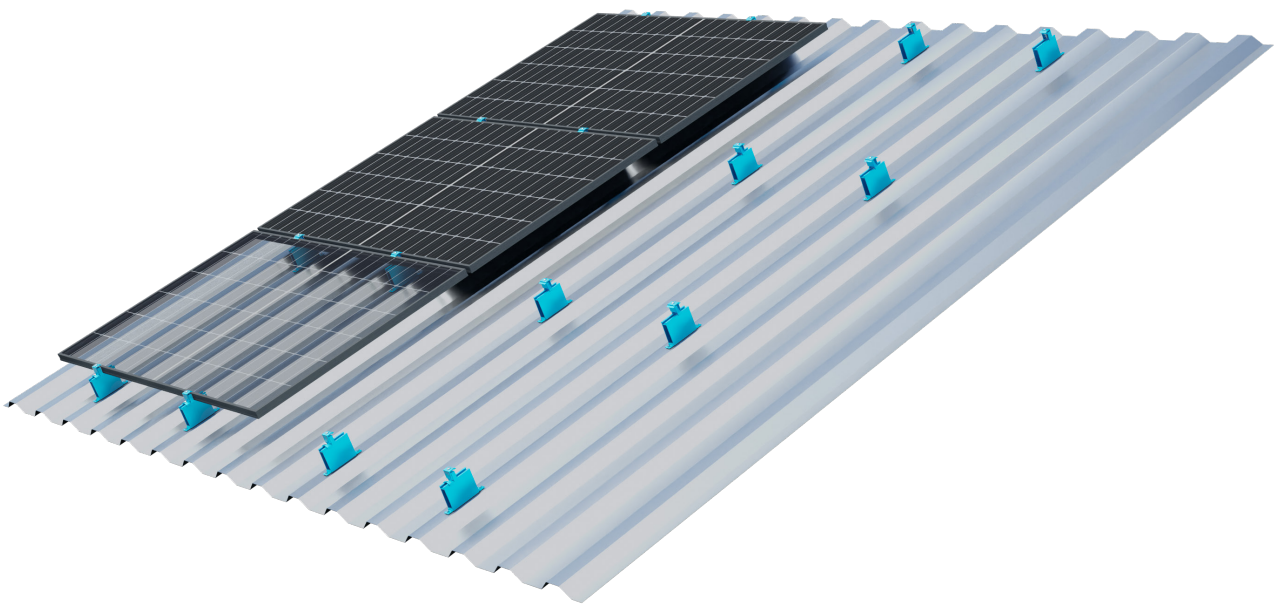




HIGH-BEAD RAIL HK 125 XL 50/100

Mounting rail for trapezoidal sheet metal roofs



Do not give away space and optimise yields

When installing with the high-bead rail HK 125 XL 50/100, no additional expansion joints are required on the roof and maximum use is made of the available surface area. This is because the rail compensates for the thermally induced length compensation due to its floating assembly. And it also maximises yields. With its height of 50 or 100 millimetres, the rail provides significantly better module rear ventilation.

The greater distance to the roof surface not only facilitates cable routing and fastening, but also simplifies the installation of systems with micro-inverters and power optimisers.

An overview of the advantages:

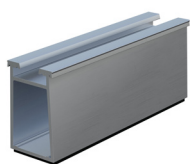
- Fast and direct attachment of the rails with sheet-metal screws on raised seams
- Low material and assembly costs
- Rail heights of 50 or 100 mm guarantee a sufficient distance from the roof covering - for optimal rear ventilation
- Floating installation with brackets reduces the number of expansion joints and enables the best possible use of the roof area
- High-bead rails are supplied pre-assembled with EPDM-sealing tape, mounting brackets are pre-drilled
- Components made of weather-resistant aluminium

HIGH-BEAD RAIL HK 125 XL 50/100

Mounting rail for trapezoidal sheet metal roofs

Application:	Trapezoidal sheet metal
Module type:	Framed modules
Module orientation:	Portrait / landscape
Distance between modules and roof:	50 mm / 100 mm
Module field length:	20 m max.
Roof pitch:	20°
Max. load:	Wind load up to 2.4 kN / m ² , Snow load up to 2.4 kN / m ²
Fastening:	Sheet metal screws
Seam spacings:	Variable
Earthing of modules:	Module clamps with grounding kit
Sheet metal thickness:	Sheet steel min. 0.5 mm, Aluminium min. 0.5 mm
Material:	Aluminium EN AW 6063 / T6, Stainless steel, EPDM seals
Colour:	Natural, extruded finish

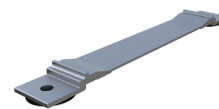
High-bead rail HK 125 XL 50



High-bead rail HK 125 XL 100



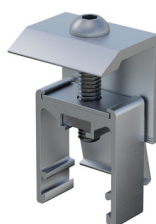
HS bracket XL 130 6,5



Mid clamp AK II Klick 30-50 A
Grounding kit



End clamp AK II Klick 30-50 A



Slider lock AK A

